



MAES Data

December 1, 2022

An overview of
where we were,
where we are, and
where we are going.

The Standard of Excellence



Vision

Our **VISION** is to build a community of lifelong learners who become responsible individuals, independent thinkers, and productive citizens in a global society.



Mission







Our **Mission**: We will SERVE our community with excellence by:

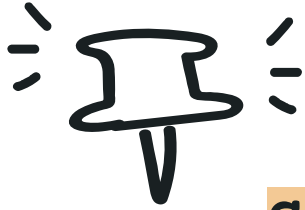
- Helping our students reach their potential as we prepare them for college and career in a safe and supportive environment
- Recruiting, cultivating, and retaining the best teachers, staff and administrators
- Providing a challenging curriculum and relevant learning opportunities
- Providing the highest quality instructional resources and tools
- Fostering a culture of continuous improvement.



Our Beliefs. . .

In the Douglas County School System, we believe that we must:

	Understand how children and adults learn and continue learning
	Build communities of lifelong learners
	Cultivate the leadership potential of every employee, student and parent in our school system
	Be creative, energetic visionaries who respond quickly to diverse and evolving issues
	Meet the diverse needs of all stakeholders (students, parents, employees, and community)
	Maintain efficient and effective administrative processes for instruction, operations, human resources, and sound fiscal management



We will review. . .

01

School Improvement Plan

We will review this year's SIP and the process of creating it.

02

Fall Data Presentation

We will review where we were, where we are, and where we are headed.

03

GMAS Overview

We go over a short overview of the GMAS that is given in the Spring.

04

Questions and Concerns

I will address any questions or concerns.

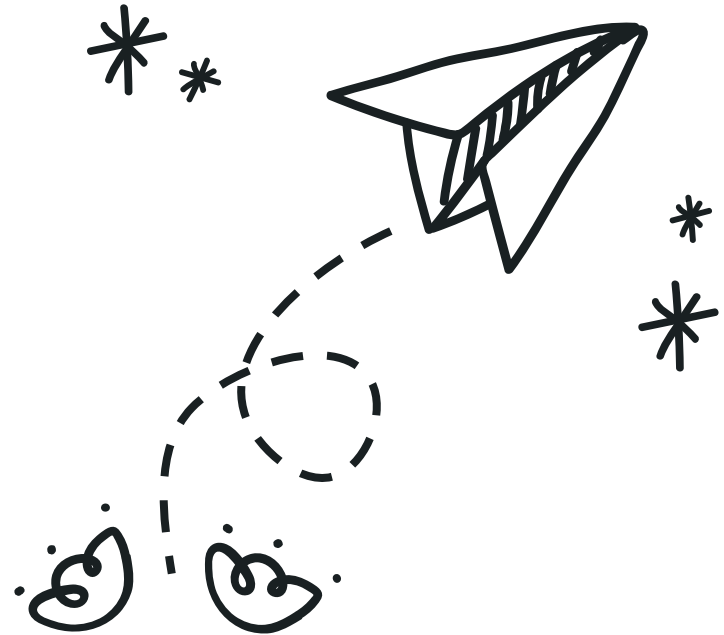
MAES School

Improvement

Plan 22-23

The Douglas County School System uses a comprehensive, continuous, improvement process to drive system and school improvement. This process is consistent and pervasive across the system. The system and all schools will follow a Plan, Engage, Evaluate, Redirect (PEER) Improvement model:

- Develop/Revise Improvement Plans
- Regularly Analyze Data and Use Data to Inform Decisions
- Monitor Progress on Goals Identified in Improvement Plans
- Make Adjustments Based on Progress



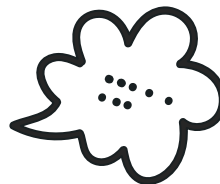
Communicate, Implement, and Monitor the Plan

Once it written, it is our job to communicate the plan with all stakeholders, make sure it is being implemented with fidelity, and regularly monitor the plan.





MAES SIP-2022-2023



The entire school staff participates in checkpoints throughout the school year. They present their data during a faculty meeting. We discuss our next steps based on our findings.



School Improvement Checkpoints



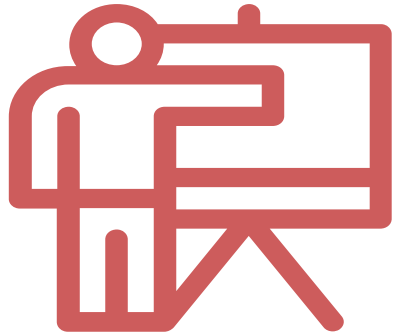
**Copy of MAES Fall Data
Presentation for Parents**



This is a powerpoint of our fall data.



GMAS OVERVIEW



GMAS Presentation

Questions & Concerns





CREDITS: This presentation
template was created by
Slidesgo, including icons
by **Flaticon**, infographics &
images by **Freepik** and
illustrations by **Storyset**

**Please always feel
free to reach out!**



Thank you!

Kristin.Martin@dcssga.org
770-651-4912
Mason Creek Elementary